

NEW CROCHET & TATTING
DESIGNS IN
CAPS·COLLARS
& JABOTS

WITH INSTRUCTIONS

MY BOOK
NUMBER
·E·

EMMA
FARNES



INCLUDING THE
SUNFLOWER MEDALLION YOKE IN CROCHET

COPYRIGHTED BY
E. C. SPENCER PUBLISHER
101 N. 3rd W. ST. LOUIS, MO.
DISTRIBUTED THROUGH
LEADING THREAD DEPTERS.

REGARDING THE BOOK.

BOOKS No. A, B, C, and D cover a wide field in crochet and I had intended these to complete my work, but I have had so many requests lately for more schemes in Caps and Collars that I undertook this new No. E.

To provide more than crochet alone, I have accepted the fainty tracing pieces shown, the handcraft of my co-worker, Miss Anna Valere, and to whom I wish to publicly extend my thanks.

I want to also thank all those who have so kindly interested themselves in my publications, and a last word of advice to all needle-workers—USE THE BETTER THREADS—your effort is deserving of something better.

Emma Farnes



COMPLETE BAND ON AUTO CAP.

Made in No. 30 Thread. Ch 27, 4 sl st, start in second from back, ch 3, sk 3, 4 sl st in 4 sts, repeat twice, ch 4, turn. 2nd Row—4 sl st over each 3 sts, ch 3 over 4 sl st, ch 3, 1 sl st in end, ch 1, turn. 3rd Row—like first, ch 7, turn. 4th Row—4 sl over 3 sts. Ch 3 over 4 sl st—3 times—then ch 3, 1 sl in end, ch 1, turn. FINISHING—2 sl in small spaces, ch 1—4 sl st, ch 2, 3 sl, ch 2, 4 sl st in large spaces, then ch 1, 2 sl st in small space.



WIDE INSERTION IN NEW FILET LACE.

This makes the larger mesh for filet work. No. 30 thread. Ch 3, instead of 2, skip 3 instead of 2 for open meshes. Use 1 st instead of dc. Chain 3 for turn, instead of 5. Use 5 st instead of 4 dc for solid meshes.

1st Row—Ch 45, 4 sl in 14th st from hook—meshes as merid—follow design. For Veil opening ch 27. Outer Edge 4 sl st in each mesh, 1p over each row, 4 sl st, 1p, 4 sl st in corner meshes.



FLOWER TRIMMING ON AUTO CAP.

Made in No. 30 thread. 1st Row—center of flower—Ch 4, form ring, 2 sl st in each st, taking up back thread only. 2nd Row—2 sl st in each st.

3rd Row—1 sl st in first st, two in next, all around, making 24 sl st, taking up back thread only. 4th Row—1 sl st in each of first two sts, 2 sl st in every third st—32 sl st. 5th Row—1 sl st in each of first 3 sts, 2 sl st in every 4th st—40 sl st. This complete center. Make a tight st. 6th Row—Ch 26, start in second st from hook, 1 sl st, 1 tr, 1 dc, 17 tr—one in each st and 12 dc in last st—sk 2 sl st, then 3 sl st, taking up back threads, over same. Repeat 7 times, finishing 8 petals.

7th Row—1 sl st over center st of the 3 just made. Then 1 sl st in each st of petal going up, 3 sl st in st of point, 1 sl st in each st coming down, over all petals, 1 light sl st over center of 3 sl st between petals.

Stem—Ch 60, 1 sl st in each st, up and down—each side of chs. Break thread. Pull thread thru center of flower, 1 light sl st in front thread of sl st in first row, then 1 sl st in each st—front thread—this forms spiral over flower.

Leaf—Ch 25, 3 dc in 4th st from hook, 1 picot—up, 5 st in next 4 sts, 1p, 4 st in next 4, 1p—3 dc, 1 dc in next 4, 1p—1 dc, 2 dc, 1 sl st in last 4 sts. Join with 1 st at stem, turn. Repeat opposite way in same chain. Finish with 1p at point—break thread.



MARIE'S CAP.

Requires 1 Ball of No. 30 Thread, 1 Ball of No. 10 Thread.

The brim or insertion is the well-known Monkey Face stitch, with variations for narrowing to a point in the back. The small plan shows the lines—use No. 10 thread. Start as shown.

1st Row—Ch 9, 8 sl st, start in second stitch, turn. 2nd Row—Ch 9, sl 7, 1 sl st in last st, turn. 3rd Row—12 sl st over 9 chs, ch 12, turn. 4th Row—1 sl st in seventh st, ch 5, 1 tr tr—2 times over hook—in last st below, turn. 5th Row—6 sl st over 6 chs, and 3 sl st over 6 chs. 6th Row—Ch 11, 1 sl st over tr tr, turn. 7th Row—12 sl st over 11 chs, turn.

8th Row—Ch 12, 1 sl st in seventh st below, ch 10, 1 sl st in last st, turn. 7 sl st over half of this 10 chs, turn, ch 5, 1 tr tr in same last st below, turn. 9th Row—7 sl st over 5 chs, ch 2, 7 sl st over balance of loop, 8 sl st over second loop, ch 9, 1 tr tr over the 2 chs, turn—12 sl st over these 2 chs, ch 12, turn. 10th Row—1 sl st over seventh st below, ch 10, sl st into same, 2 chs below, turn—7 sl st over half these 10 chs, turn—ch 6 to end of row, turn.

11th Row—6 sl st over 6 chs, ch 3, 7 sl st over next loop, 6 sl st over next, ch 9—turn. 12th Row—1 sl st in seventh st of second loop below, ch 3, sl st in loop of 3 chs, ch 3, sl st in next sl st, ch 2, 1 tr tr to end of row below, turn. 13th Row—11 sl st over 9 chs, sl st in first loop of 3 chs, ch 3, sl st in next loop of 3 chs, 11 sl st over next loop, ch 12, turn. 14th Row—1 sl st in seventh st below, ch 10, sl st in 3 chs, turn—7 sl st over half the 10 chs, turn—ch 6, sl st in seventh st of next loop, ch 6, 1 tr tr to end of row, turn.

15th Row—6 sl st over 6 chs, 7 sl st over next loop, ch 3, 7 sl st, and then 8 sl st to end, ch 5, turn. 16th Row—sl st in seventh st of second loop, ch 3, sl st into 3 chs, ch 3 over next sl st, ch 2 to end, turn. 17th Row—12 sl st over 9 chs, sl st into 3 chs, ch 3, sl st into 3 chs, then 13 sl st to end, ch 12, turn. 18th Row—1 sl st in seventh st below, ch 11, sl st into 3 chs—turn—7 sl st over half these 10 chs, turn—ch 5, sl st in seventh st of second loop, ch 6, 1 tr tr to end of row below, turn. 19th Row—Same as fifteenth row—continue motif row, complete 34 figures—then omit—see starting shown in diagram.

End of Insertion—1st Row—(omitting) Ch 12, sl st in 8th st below, ch 10, sl st into 3 chs, turn—7 sl st over half these 10, turn, ch 6, sl st in seventh st of second loop, turn. 2nd Row—8 sl st over 6 chs, ch 2, sl st over next loop, 7 sl st to end over half the 12 chs, turn. 3rd Row—Ch 7, sl st over last st of second loop, ch 2, sl st into 3 chs, ch 3, sl st in next sl st, ch 6, 1 double tr tr—2 times over hook—to point of last row, turn. 4th Row—2 sl st over 2 chs, sl st into 3 chs, ch 3, sl st into 3 chs, 9 sl st to end, ch 12, turn. 5th Row—1 sl st in seventh st, ch 9, sl st into 3 chs, turn—6 sl st over half the 9 chs, turn—ch 6, sl st to end, turn.

6th Row—sl st over 6 chs, ch 2 now, 7 sl st over loop and 7 sl st to end, turn. 7th Row—Ch 9, sl st over 2 chs, ch 5, 1 tr tr, end, turn. 8th Row—7 sl st over 5 chs, 12 sl st over 9 chs, turn. 9th Row—Ch 12, sl st in sixth st, ch 6, sl st in end, turn. 10th Row—7 sl st over 6 chs, 6 sl st over half the 12 chs, turn. 11th Row—Ch 3, sl st in center of 7 st below, ch 5, 1 tr tr in next, turn. 12th Row—7 sl st over each of two loops, turn. 13th Row—Ch 7, sl st in end, turn. 14th Row—1 sl st over 7 chs.

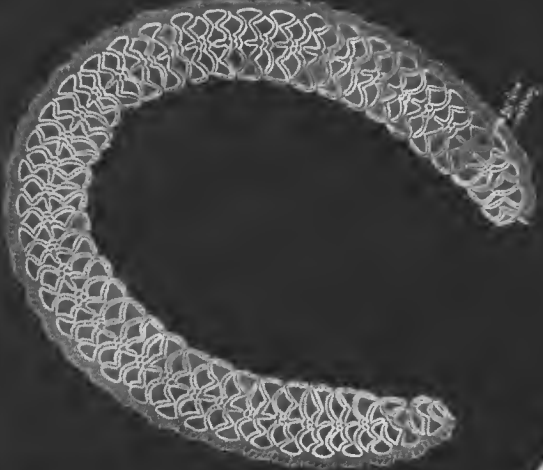
EDGING—Inner—1 sl st over each of first 5 spaces and 1 sl st over tr tribles. 2nd Row—Use No. 30 thread—2 sl st ch 5, sl st. 3rd Row—sl st, 1 tr, 4 sl st over each loop of 3 chs.

Outer Edge—14 sl st over first two loops—each end, 15 sl st over all others. 2nd Row—1 dc, ch 2, sl st. 3rd Row—5 dc in each space. 4th Row—1 dc, ch 1 over each st. 5th Row—Use color silk if wanted—1 sl st over each chain st, ch 3 over each dc—this completes the ruffle for a dainty effect.

Material in cap is 1 3/4 inches in diameter, using 3/4 inch for casing into which elastic is placed.

Featherbone is used to hold the outer ruffle in its dainty shape—requiring 30 inches—caught under the outer edging.

Four Medallions are placed in the top—where if desired. Instructions.



MEDALLION—Is made in No. 30 thread—1st Row—Ch 16, form ring, 7 sl st in ring. Ch 3, turn 1, tr tr in first sl st, turn. 2nd Row—7 sl st over 3 chs, ch 3, 7 sl st over part of original 16 chs, ch 15, turn. 3rd Row—1 sl st in sl st last made, turn—7 sl st over first part of 16 chs, turn—ch 3, sl st in 7th or nearest sl st—beside the 3 chs—ch 3, sl st into 3 chs below, ch 3, sl st in first sl st beyond the 3 chs, ch 11, sl st over the tr tr, turn—7 sl st over half of this 10, ch 5, 1 tr tr in same st—that is in the tr tr below, turn. 4th Row—7 sl st over first 5 chs, ch 3, 7 sl st over 5 chs left in previous loop and 1 tr into 3 chs, ch 3, sl st into 3 chs, 7 sl st, ch 3, 7 sl st over remaining 16 chs, ch 15, turn. 5th Row—sl st over first st below, turn—7 sl st over first part of 16 chs just made, turn, ch 5, sl st in 6th st below—beside the 3 chs—ch 3, sl st into 3 chs, ch 3, sl st into next sl st, ch 10, sl st into next 3 chs, turn—7 sl st over half the 10 chs, turn—ch 5, sl st in 7th st below, ch 3, sl st into 3 chs, ch 3, sl st in next sl st below, ch 10, sl st in last sl st over tr tr, turn. 7 sl st over half these 10 chs, turn. Ch 5, 1 tr tr over tr tr below.

6th Row—7 sl st over 5 chs, ch 3, 7 sl st over loop, sl st into 3 chs, ch 3, sl st into 3 chs, 7 sl st over next loop. Repeat to end of row, ch 16, turn, sl st over sl st last made, turn. Continue until there are 5 rows, to form half the diameter.

Medallion—1 st omitting row—Ch 11—instead of 16—sl st over 7th sl st below.

7th Row—sl st into 3 chs, ch 3, sl st over next sl st, ch 10, sl st into 3 chs, turn—7 sl st over half this 10 chs, turn—ch 5, 1 tr over last of 7 st below, ch 3, sl st into 3 chs, ch 3, sl st over next sl st—repeat twice from near. Ch 5, 1 tr over same below, turn. 2nd Row—7 sl st over 5 chs, sl st into 3 chs, ch 3, sl st into 3 chs, 7 sl st over 5 chs, ch 3, 7 sl st over next loop—repeat twice then 7 sl st over half the 11 chs, ch 10, turn. 3rd Row—sl st into 3 chs, turn, 7 sl st over half the 10 chs, turn, ch 5, sl st over last of 7 sl st below, ch 3, sl st into 3 chs, ch 3, sl st over first of next 7 sl st. Ch 10, repeat twice. 1 tr tr in last of row below, turn. 4th Row—7 sl st over next loop—then work same as second row until last loop of 5 chs is reached, 1 sl st in last sl st below, ch 10, turn—continue to 5th row or point.

Form row all around the balls in—10 sl st in each space. 2nd Row—1 sl st of 4 chs, back to sl st—ch 1, 4 sl st over same.



PILET FLOWER CAP

Requires 3 Balls of No. 30 Thread.

Point of Hood—While the drawing shown gives the actual count for this work, it is given here in detail for the turning mesh. 1st Row—Ch15, 4 solid meshes—(1 m), start in 8th st from hook, ch2, 1 st in last st, this forms the starting mesh—turn. 2nd Row—Ch 7—also 7-form open mesh—(1 m)—5 am, start over dt, ch 3, turn. 3rd Row—last one over 2 ch—sts—ch 2, 1 st in same st, ch 7, turn.

4th Row—4 am, 1 cm, 2 am, ch 3, turn. 5th Row—3 am, 1 cm, 4 am—ch 2, 1 st in same st, ch 7, turn. 6th Row—4 am, 1 cm, 4 am, ch 3, turn. 7th Row—4 am, 1 cm, 5 am, ch 2, 1 st in same st, ch 7, turn. 8th Row—6 am, 1 cm, 6 am, ch 3, turn. 9th Row—4 am, 1 cm, 7 am, ch 2, 1 st over last cm, ch 7, turn.

10th Row—6 am, 1 cm, 5 am, ch 3, turn. 11th Row—6 am, 1 cm, 5 am, 1 cm over same, ch 7, turn. 12th Row—5 am, 1 cm, 7 am, ch 2, turn. 13th Row—5 am, 1 cm, 4 am, 1 cm over same, ch 7, turn. 14th Row—5 am, 1 cm, 6 am—ch 3, turn. 15th Row—4 am, 1 cm over same, ch 7, turn. 16th Row—5 am, 1 cm, 5 am—ch 3, turn. 17th Row—3 am, 3 cm, 1 am, 1 cm, 5 am, 1 cm over same, ch five, turn.

18th Row—1 am over same, 5 am, 1 cm, 1 am, 1 cm, 3 am, 3 cm, ch 3, turn. 19th Row—2 am, 2 cm, 1 am, 3 cm, 1 cm, 1 cm, 5 am, 1 cm, ch 5, turn.

There are 42 rows to center of top, follow the design, all rows are now straight. Center of top is Ch45, 13 cm.

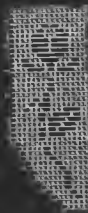
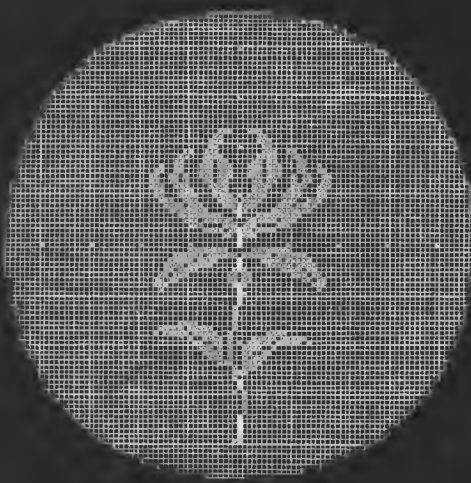
The *Flack or Netting* shown in the drawing and can be readily followed. When completed, gather all around with a slit in mesh, ch 2, slip next mesh, slit in third mesh, ch 2.

Beading is worked over back part of cap only—3 st over every other 2 ch, ch 3, between.

Outer Edge—Shown on cap with hood folded back—1st Row, 1 cm over each row. 2nd Row—2 slits in every other mesh—ch 3 between—and around the back of cap, use 2 slits in each loop, 5 cm between. 3rd Row—1 st in first loop, ch 2—2 st with 2 slits between each in next loop, 1 st in third loop, ch 2—this 3rd row all around cap. It is worked (after hood is sewed on) over the inner edge of hood—that is both under and over the line of joining—using a slit in every other mesh, ch 3 between, on upper side.

Outer Edge of Hood or Trim—1 st in first mesh, 1 cm, 5 st, 1 st in second mesh, 1 st in third mesh.

The Hood or Trim is sewed to the cap proper.





LARGE MEDALLION CAP.

Requires 2 Balls of No. 20 and 1 Ball of No. 30 Thread.

This medallion used on the side of a cap is a pretty effect, any other of course can be as well adapted, as it is only sewed on. Medallions might be used with other caps shown in this book if one likes this effect better than as they are shown.

Start at center of cap with No. 20 thread. 1st Row—Ch 10, form ring, ch 3, 2 dc in first. 2nd Row—Ch 3, 42 dc over 2nd dc that is 2 dc in every other one. 3rd Row—Ch 4, sk 1, 1 sl st in next st, there are 21 of these loops. 4th Row—Ch 4, 1 sl st in each loop. 5th Row—Ch 5, 1 sl st in each loop. 6th Row—Ch 5, 1 sl st twice—in each loop—count them—you should have 42 loops.

Work thread up to center of loop. 7th Row—Ch 11, 1 sl st in each of the 42 loops. 8th and 9th Rows—Work thread up to center of loop—then same as 7th row. 10th Row—Work thread up. Ch 3, 3 dc in center of loop, ch 11, 1 dc in next loop. Continue this same row until there are 10 of them. Then ch 12, instead of 11 for the last 3 rows.

Band—1st Row—Ch 15—3 dc in 4th st from hook, ch 2, sk 2, 4 dc in next 4 sts, ch 2, sk 2, 1 dc, ch 3, turn. 2nd Row—3 dc over first 2 chs, ch 2, sk 4 dc—4 dc over next 2 chs, ch 2, 1 dc, ch 3, turn. Work 12 of these rows.

Connect 4 loops of cap in every third row of band, that is work thread up to center of loop, ch 3, 3 dc—ch 5 to first row of band, 1 sl st, ch 4, 1 sl st over this first row, ch 3 back again, 4 dc in next loop of cap. This will connect every loop of cap.

Edging on Band in No. 30 thread—1st Row—Ch 5, 1 sl st over every other row. 2nd Row—Work thread to center of first loop, ch 4—2 dc, ch 3, 2 dc in second loop, ch 4, 1 sl st in third loop, 1 shell st of 7 dc in 4th st of same loop, ch 4. 3rd Row—3 dc with 1 p between each over 3 chs, ch 2, 1 sl st over 4 chs. Ch 3, 2 dc, 1 p, 2 dc in center st of shell st, ch 3, 1 sl st over next 4 chs, ch 2.

Ch 4 is a chain made of 4 double threads.

Large Medallion—1st Row—Chain 10, form ring, 27 dc in ring. 2nd Row—Ch 3, 40 dc over 27 dc—that is 2 dc in every other dc below. 3rd Row—Ch 4, sk 1, 1 sl st. There are 20 of these loops. 4th Row—Ch 4, 1 sl st over each loop. 5th and 6th Rows—Ch 5, 1 sl st. 7th Row—Ch 5, 1 sl st over loop, then shell st of 7 dc in 4th st of same loop, 1 sl st in center of second loop. Ch 5, 1 sl st in third loop. There are 10 shells in this row. 8th Row—Ch 6, 1 sl st over each loop and each shell. 9th Row—Ch 6, 1 sl st—3 times—then shell st—3 shells in this row.

10th Row—Ch 7, 1 sl st over each loop and shell. 11th Row—Ch 7, 1 sl st, then a shell—10 shells in this row. 12th Row—Ch 6, 1 sl st over shell, ch 5, being in twice over loop in center of shell. 13th Row—Ch 6, 1 sl st over each loop—33 loops. 14th Row—Ch 6, 2 sl st over each loop. 15th Row—2 dc, ch 3, 2 dc over first loop, ch 3, 1 sl st over second loop. Ch 5. 17th Row—Ch 4, 2 dc, ch 3, 2 dc over 3 chs in center, ch 4, 1 sl st over 3 chs. 1 shell st in 1st of same loop, ch 4. 18th Row—3 dc with 1 p betw each over 3 ch. in center. Ch 3, 1 sl st over 4 chs, ch 2, 1 dc, 1 p, 1 dc in center st of shell, ch 2, 1 sl st over next 4 chs, ch 3.

PETAL STITCH CAP.

Requires 2 Balls of No. 30 Thread.

Start medallion in center of cap. 1st Row—Wind thread over little finger 10 times, 25 sl st over this ring. 2nd Row—Ch 3, 1 dc in center st, ch 2, sk 1, 2 dc in next st, ch 2. Repeat 12 times, making 14 spaces. 3rd Row—Work thread to first space, ch 5, 1 p st of 4 sl st—worked over hook 4 times—in first space, ch 7, 1 p st of 5 sl st in second space, ch 7, repeat 12 times.

4th Row—10 sl st over 7 chs, ch 2 over each p st. 5th Row—Work thread over first scallop. 1 sl st over 2 chs, ch 3, 1 dc, ch 3, 2 dc in same space, ch 5, 2 dc, ch 3, 2 dc over second 2 chs. Ch 5.

6th Row—Work thread to point of 3 chs in center of figure, ch 3, 1 dc, ch 3, 2 dc—ch 3, 1 sl st over 5 chs, ch 3—2 dc, ch 3, 2 dc in second point; repeat around. 7th Row—Work thread to first point of 3 chs, ch 3, 2 dc, ch 3, 3 dc—ch 7 to second point, 3 dc, ch 3, 3 dc. 8th Row—Thread to first point of 3 chs, ch 3, 2 dc, ch 3, 3 dc—ch 4, 1 sl st over 6 chs, ch 4—3 dc, ch 3, 3 dc in second point.

9th Row—Thread to 3 chs, ch 3, 2 dc, ch 3, 3 dc, ch 7 to second point, 3 dc, ch 3, 3 dc.

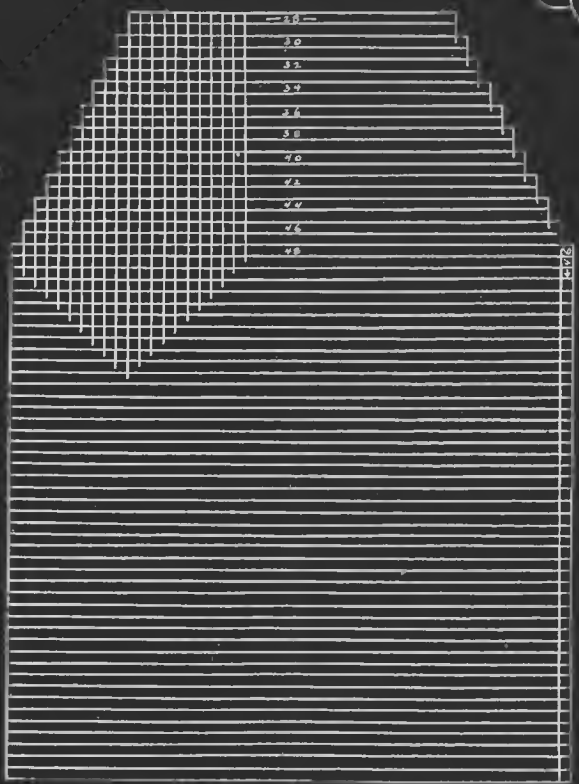
10th Row—Same as 8th row, this is the last row worked around the center.

Start First Strip or Insertion—Work thread to first point of 3 chs, ch 3, 2 dc, ch 3, 3 dc—ch 7. 3 dc, ch 3, 2 dc in second point, ch 3, Turn—3 dc, ch 3, 3 dc in point just made. Ch 4, 1 sl st over 7 chs, ch 4. Work 14 rows. Make seven strips. Start second strip at left of first strip, over third point of center.

Edging Between Strip—1st Row—Start at wrong side of strip at lower point, 2 sl st in each point, ch 6 between. 1 sl st over same. Between strips, ch 6, work same over side of second strip. 2nd Row—Turn, do not break thread—5 sl st, 1 p, 5 sl st over each loop. Place over material, 18 inches wide, cut circle—gather between insertions, baste and sew on.

Band, 1st Row—Ch 13, 3 dc in fourth and fifth st from hook, ch 3, 4 dc in next 2 sts. Ch 3, sk 3, 1 sl st, ch 3, 5th dc, ch 4, 4 dc in next 4 sts, ch 3, turn. 2nd Row—4 dc, ch 3, 4 dc over 3 chs in center of figure just made, ch 3—4 dc, ch 3, 4 dc over center of next figure, ch 3, turn. Make the band 24 inches long, 1 in. The edging is the same as edging between strips or insertions.





THE SUNFLOWER MEDALLION CAP.

Requires 4 Balls of No. 50 Thread.
This is the Dutch Cap Model and is shown both in this style and with the rows of medallions folded back. Either effect is a pretty one.

Netting.—The drawing plan shows the layout of the netting. It is 2 1/2 inches wide at narrow end, increasing 2 meshes—one at each end—in every other row, up to the 24th row. Then it is worked straight 48 spaces wide, for 46 rows. The motif is—Chain 154, 23c in 9th and 10th at from hook. Then ch3, sk4, 23c in next 2 rows, ch4, sk3, 23c and repeat till until you have 23 meshes or spaces. CH 8, turn.

2nd Row—13c, ch4, 2 3c in first space—this will increase one space. Then ch3, 23c in second space—repeat to last space, then 24c, ch4, 13c, ch3, turn—to add 1 space at end. **3rd Row**—13c in first space, ch4, 23c in second space. Increase 2 spaces in every other row for 23 rows—one at each side. Then continue the same space straight for 56 rows. Chain 101, turn, 13c instead of 23c in first and last space at each row. There are 65 rows, work 23c instead of 24c in last row, for a heading.

The Sunflower Medallion is the same as the instruction on opposite page in the yoke. There are 3 medallions that join to the netting and 6 medallions joined to the cap as shown. Make and connect these 15 medallions. The first row between medallions and netting—Start at the 4th point (in 5th medallion) from the point that joins to the 5th medallion. 1 st st, ch4, 1 pt st of 23c. Ch6, 4c in next point, ch4, 4c in next point, ch2, then to reach medallion, wind thread 4 times over hook, 1 pt st of 3 st in last point of past medallion, leaving 2 loops on hook, 1 pt st of 3c in first point of next medallion, will keep 2 loops on hook, 1 pt st of 3 st in center st of the 2 pt sts just made, working all the 2 loops on hook, ch5, 1 pt st of 3 st to the same center st. This forms the four petal figure between the medallions and the netting, ch 6, repeat.

2nd Row—13c, ch1, sk1. **3rd Row**—1 pt st of 23c over first 13c, ch2, sk second 13c. **4th Row**—Same as second. **5th Row**—1 pt st in each st, taking up front thread only. **6th Row**—1 pt st over next 2, 1 pt st of 4c in each 1 pt st, taking up front thread only. Before working the 6th row fill the space between lowest medallions—a 4 petal figure, as explained, then ch2, 1 pt st of 20 st over the 5 chs of inner medallion, ch2 and repeat the 4 petal figure, break thread.

Edging—1 st st over the 5 chains at bottom, ch2, 5 st with 1 p between each, in each point of all outer medallions, ch2, between.

Over Netting that joins to medallion edge—Work 1 st st in each loop, ch2, 1 st st in next loop, skipping row between—this will form gathering. On the straight line of 23 spaces, take 1 st in each mesh or space, ch 2 between. Then sew the netting to the medallion strip on its fourth row.



SUNFLOWER MEDALLION CAMISOLE.

Requires 1 Ball of Number 40 Thread.

While this book is devoted to Caps and Collars, the Sunflower Medallion is such a pleasing effect in the cut, shown on the opposite page, that I have created this yoke to match it. Both have been much admired. This is made up of 12 medallions and is—firmly crocheted—size 36.

Each Medallion is worked separately—1st Row—Wind thread over little finger 10 times, make 24 sl-sts over this ring. 2nd Row—Ch 3, 1 dc in same stitch. Ch 2, sk 1, 2 dc in next stitch. Repeat 10 times, making 12 spaces. 3rd Row—Work thread over first space of 2 chains, 1 sl-st, ch 5, 1 petal stitch of 4 double triple treble (thread over hook 4 times)—(one blade of this petal is formed by the 3 chs)—chain 1, 1 petal stitch of 3 double triple treble in second space, ch 7, repeat for 10 more petals, one over each opening or space.

4th Row—10 sl-sts over every 7 chains, ch 2, over petal stitch.

5th Row—Work thread over first scallop with sl-sts, 1 sl-st over first space of 2 chs. Ch 3, 1 dc, ch 3, 2 dc in this space. Ch 6 to next space, 2 dc, ch 3, 2 dc. Repeat all around.

Medallions are connected on 2 of the 12 points—2 dc, ch 1, 1 sl-st over the 3 chs of first medallion. Chain 1 back again, 2 dc in same space. This will leave 4 points at each side of medallion.

Upper Edge—1st Row—Start over second point of medallion 1 sl-st, ch 3, 3 dc, ch 7, 4 dc in third point, ch 7. Wind thread over hook 4 times, 1 pet-st of 3 st in 4th point, keeping 2 loops on hook, 1 pet-st of 3 st in first point of next medallion, then petal-st of 3 st in center stitch of the



190 petals just made, working off the 2 loops on hook. Now ch 6, 1 pet-st of 3 st in same center stitch. Ch 7, 4 dc in second point of second medallion.

2nd Row—1 dc, ch 1, sk 1. 3rd Row—1 petal-stitch of 2 dc in every other space, chain 3 between. 4th Row—1 dc, ch 1, skip 1. 5th Row—1 sl-st, ch 4 over first dc, skip second dc, 1 sl-st in third dc.

6th Row—1 sl-st, ch 2, in first loop, 4 dc with 1 picot between each in second loop. Ch 2, 1 sl-st, ch 3 in third loop. 1 sl-st, 1 picot, 1 sl-st in fourth loop. Ch 3, 1 sl-st, ch 2 in fifth loop.

Lower Edge—1st and 2nd Rows—same as first and second of upper edge—1 dc in each stitch in lowest space of front point. 3rd Row—1 sl-st in each stitch. 4th Row—1 sl-st over same, 1 picot, skip 1.

Shoulder Straps—Made of 2 narrow strips, worked separately.

1st Row—Ch 13, form ring, 5 sl-sts over half this ring, chain 3 turn. 2nd Row—1 dc in first sl-st, ch 5 skip 5 sl-sts, 2 dc in last sl-st, ch 1, turn. 3rd Row—1 sl-st in very first sl-st, 2 sl-sts over 5 chs, 1 sl-st between the 2 dc below, ch 3, turn. There are 63 spaces in each strip.

Flange on outer edge—1 sl-st over each space, ch 3 between.

Lacing in Yink—In the 15th space, 1 sl-st, ch 2, 1 dc in 15th space of other half, ch 2, 1 dc in next space of first half, 1 dc in next space of second half, ch 2, and continue 1 dc each side for 10 spaces, then ch 2, and one sl-st. Stitch on each side for 15 spaces, then ch 2, and use the 1 dc to each side for 10 spaces.



KNOT STITCH CAP

Center Medallion, Band and Edging 1. Worked in No. 30.

Knot Stitches in No. 20. Requires 2 balls No. 20 and 1 of No. 30. For size large enough to sure to have 4 knots in medallion.
Center Medallion—1st Row—Ch 1, firm ring, work 39 sl st over ring. 2nd Row—Ch 7, sk 2, repeat 3 times. 3rd Row—4 sl st, 1 ch, 5 sl st over every 7 chs. 4th Row—Work thread up to point, ch 7, to next point, repeat 3 times. 5th Row—sl st over every 7 chs, take up back thread only. 6th Row—Ch 3, sk 2, 4 dc, sk 2, ch 3, 1 sl st. 7th Row—Ch 4, 3 dc over 4 dc, ch 4, 1 SINGLE sl st over 1 sl st below. 8th Row—Ch 5, 12 dc over 8 dc, ch 5, 1 SINGLE sl st over same. 9th Row—Ch 7, 17 dc over 12 dc, ch 7, 1 SINGLE sl st over same. Break thread.

Work 7 Knot stitches over every leaf of medallion. Connect every point with 1 knot, so there will be 9 knots. Ch 1 after each knot. This will keep them in place.

There are 2 rows of Knot Stitches.

Work BAND Separately—1st Row—Ch 2, 2 dc in 4th and 5th st. from hook. Ch 3, 3 dc, ch 3, sk 5, 3 dc, ch 3, 3 dc, ch 3, turn—2nd Row—same. 3rd Row—3 dc, ch 3, 3 dc over same. Ch 3, 1 sl st over middle of 3 chs. below, ch 3. Repeat. There must be 42 double rows of this band, or 24 single rows. This gives you 4 little loops. Join Band. Connect every loop with one knot stitch of cap.

EDGE Medallion, or wheel—Ch 1, firm ring. Then 8 times 3 dc, and 17 over ring. Close. Connect each wheel with 1 p. on every other loop of band. Connect every wheel with 1 p. to the next. There are 24 little medallions in an 1 cap, and 12 under these, connect with 2 p.

A Dainty Edge, instead of the wheel in this. 1st Row—Ch 6 in every 1 st of band. 2nd Row—Ch 6, 3 sl st. 3rd Row—10 dc with 1 ch. between each, over first loop, ch 2, 1 sl st, ch 2 over 2nd loop. 4th Row—Ch 4, 1 sl st between each double treble.

SMALL MEDALLION CAP

Requires 2 Balls of No. 20 and 1 Ball of No. 30 Thread.

Make the center of cap first. Start with No. 30 thread. The seven medallions are worked separately. These medallions are made at one row. Chain 13, firm ring. Ch 4, 1 st of 2 tr thread over hook 3 times—in ring. Ch 5, 1, 4 st of 3 tr st, ch 5, repeat 10 times, ch 5, close. There are 12 petals in each medallion. Connect second medallion on two loops to first medallion, that is ch 2, 1 sl st over loop of first medallion, ch 2 back, 1 tr st, ch 2. Repeat for second loop.

Third medallion is connected with 4 loops by first and second medallion, by placing it between them. For medallion in the center one—the four are connected on 7 loops.

1st Row—around center—3 dc st, ch 4, 3 sl st in each outer loop, 3 sl st in connecting loops. Break thread. 2nd Row—Start with No. 20 Thread, in first pic—that is 4 chs—take a slip st, ch 5, sl st in next point, ch 5 between medallions. Continue around for 36 loops. 3rd Row—Ch 7, 1 sl st over each loop, going twice in each center loop over medallion, making 42 loops.

4th Row—Ch 1, sl st over each loop. 5th Row—the petals begin in this row—Ch 8, go back in 4th st with 1 sl st—ch 10, go back in 5th, with sl st, ch 4, 1 sl st in next loop. Repeat around and work 12 rows this way.

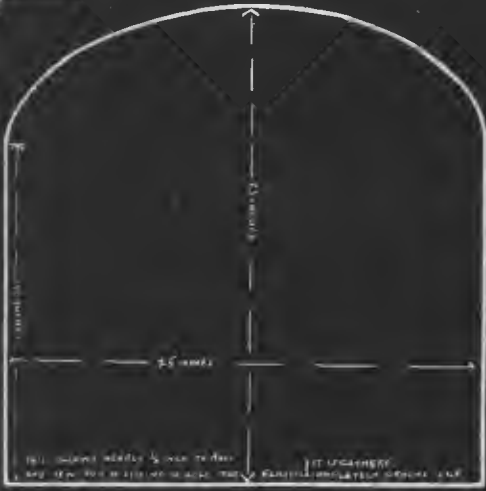
Band in No. 30 thread and is 21 medallions, worked as in center, connected with 2 loops and joins at end. The 2 points at back of cap are 2 medallions for each, as shown. First upper row of band—1 sl st, ch 3, 1 dc in second loop of medallion, ch 4, 2 dc in third loop, ch 5, with thread over hook 3 times, take 1 h in fourth loop—1 loop on hook, 1 h in first loop of next medallion, 1 dc over the 2 dc just made, working 18 loops, ch 5, 2 dc in second loop, ch 4.

2nd Row—1 st of 2 dc in one st, ch 3 between. 3rd Row—2 dc over 1 st, ch 2.

Lower Row on Band—Same as first row around the center of cap. Joining—After 12th row of cap is finished, ch 7, going back in 2nd st, ch 2, 1 sl st in first space of band, ch 7, go back in second st, ch 2, 1 sl st in second loop of cap. Skip 1 space of band, then 2, then 1 again until all loops are joined.

Flower on Draw String—No. 30 thread—Ch 13, firm ring, ch 5, 1 st of 4 tr thread, over hook 4 times—in ring. Ch 7, 1 right sl st in ring. Ch 6. Repeat 6 times. There are 7 petal stitches. Draw String is a chain of 4 double threads.





A Dainty Net Cap

Requires 1 Yard of Bobbinet and Elastic, 1 Ball of No. 30 Thread.

Medallion—made with 1 shuttle—Join 2d, p. 31, long p. 31, p. 24 close. Turn. Leave nearly 1/4 inch thread, ring 7d, 6p with 2d last each, 7d, close. Leave short space, make another large ring, joining first p. to last p. of ring before, turn. Leave nearly 1/4 inch, make another small ring, joining first p. to last p. of first ring, and middle p. to center p. of first ring. Repeat until there are 5 small rings joined to long part of first ring and 10 large rings.

2nd Row—The thread to second p. of large ring. Make ring 3d, 2p with 1d between, 3d, close. Tie to next p. leave 1/4 inch thread, make second ring joining to ring just made by first p. leave 1/4 inch, join to next p. of large ring. Then leave 1/4 inch, make another ring, joining by first p. to ring before, leave 1/4 inch thread joining to fifth p. of large ring. In making 4th ring, which is center, leave 1/4 inch thread. This thread joins to second p. of next large ring. For next three rings, graduate space as above—1/4, 1/4 and without space.

Edging—Join same a. large rings of medallion, making joining piece slightly longer than others and leaving always 1/4 inch thread before making next ring. Second row of edge or edging is same as second row of medallion.

The sketches show the cutting of the net for this cap.

ALL-OVER TATTED CAP.

Requires 1 Ball of No. 20 Thread.

Medallion in center of crown, ring a piece—about 1/4 inch—with 2d between each. Close and tie. **2nd Row**—Join 7d, join to p. of center, 7d, close. Chain 2d, p. seven times and 2d, and repeat ring, joining to next p. of center. Continue for 7 rings and chains, tie. **3rd Row**—Join 2d, join to second piece of chain, 2d, close. Leave 1/4 inch thread. Skip a piece of chain and join a ring to next piece. Note—This would make 2d loops—2d is needed to build out, so it is necessary to skip 2 pieces once, over the third and seventh chains. **4th Row**—Same as 3rd row, 1 ring to each loop. Then 3 more rows in same way. This makes 9 small rings, one in center of each.

Now start the band of cap. Make 16 medallions, same as center of cap, joining the middle pieces of two meeting chains. On the outer or free chains tie thread in a middle piece of chain, 2d, 7p with 2d between each, 2d, join to middle piece of next chain, continue around. This same chain for lower edge and finish on 5 row—of as desired of the small rings and 1/4 in thread—joining in second and sixth pieces, on the first row.

There are 25 rows of the small ring and loop, worked from the band up, 3 rings over each chain, making 108 loops.

To join the center and outer cap, work ring of 4d, p. 4d join to loop of top, 4d, 4d, close. Then chain 3, take up 1 loop of outer cap, ch 2, take loop, ch 2, take loop, ch 2, take up 4th loop, ch 3, and repeat the ring. There are 27 rings and 108 loops.



POINSETTA FILET COLLAR

Requires 3 Balls of No. 60 Thread

This finished collar is 18 inches from point to center at back and 17 inches at the widest part. Neck width is 7 inches.

Instructions—Start at lowest line in center of back. Chain 45, make 12 open meshes. Increase at sides and follow design. After the last long row at back continue on down one side to point. Start with new thread directly into last chains for the other point.

Edging—1st Row—All around collar—3 sl st in each straight mesh, 4 lts in slanting meshes. 2nd Row—For inner neck side—4 sl st over same, 1 picot of 4 chs—back to sl st—slc 1.

2nd Row—Outside Edge—2 sl st over same, ch 4, st 4 sl st—2dc chs, 2dc—in next stitch. Ch 4, st, 2 sl st over same. 3rd Row—5 sl st over 4 chains, 5 sl st, ch 3, 6 sl st over loop of 5 chs. 5 sl st over next 4 chs, 1 tight slip stitch in center of the 2 sl st below.



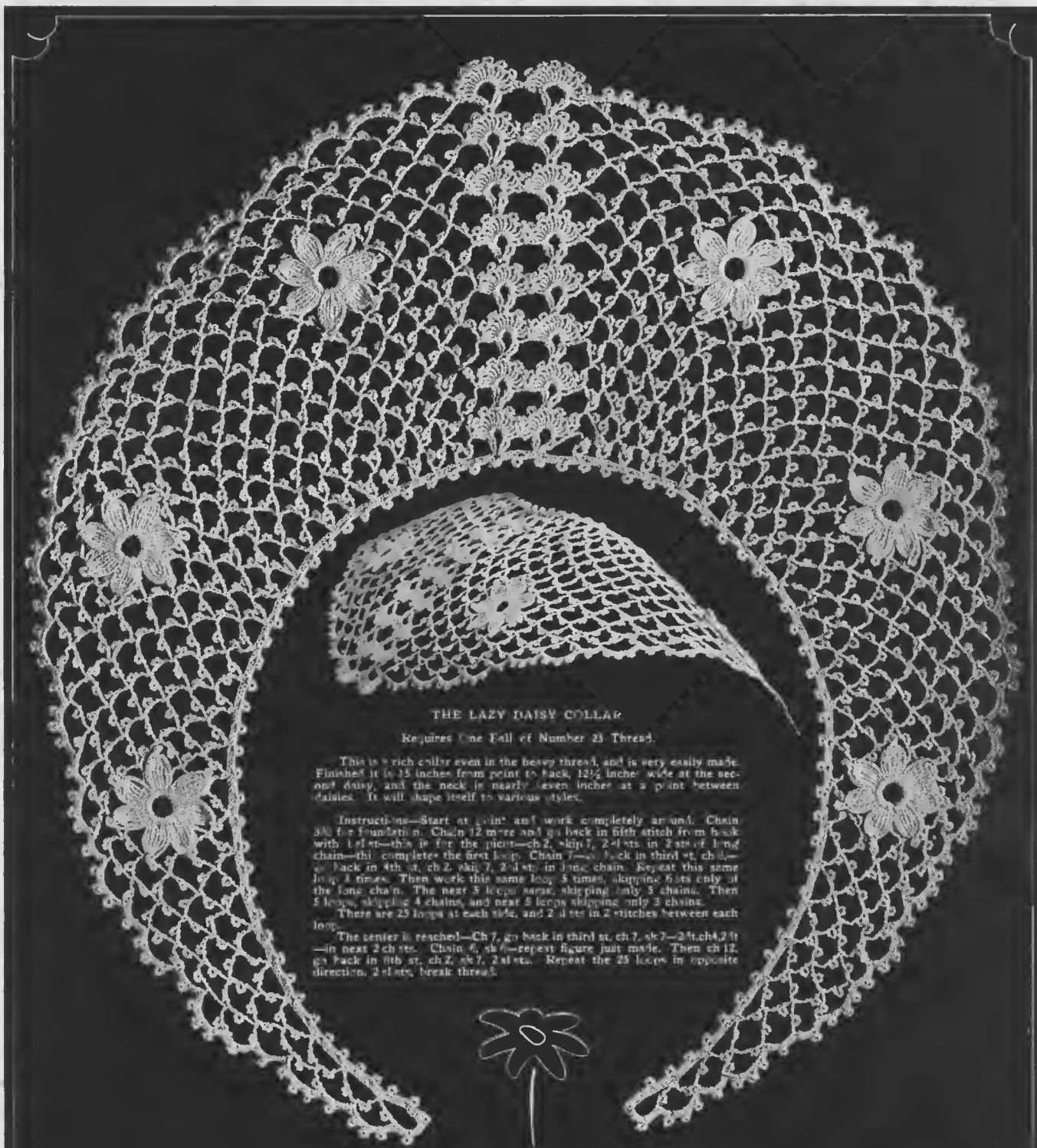


CONVENTIONAL SPRAY FILET COLLAR

Requires 3 Balls of Number 60 Thread

The finished collar is 17 inches from point to back, 12 inches wide.
Inner neck measure is 6 1/2.

Instructions—start at back, chain 254 for 53 open meshes. Follow design, continuing directly on down one side. Then join new thread and work directly into meshes of back panel down to the other point.
Edging—1st Row—3 slts in all straight meshes, 4 slts in slanting meshes. 2nd Row—5 slts over same, ch 4, for point, 1 st in last slt, continue 3 more points, each worked in slt of one before, ch 4, 3 slt over same.



THE LAZY DAISY COLLAR

Requires One Ball of Number 25 Thread.

This is a rich collar even in the heavy thread, and is very easily made. Finished it is 15 inches from point to back, 12½ inches wide at the second daisy, and the neck is nearly seven inches at a point between daisies. It will shape itself to various styles.

Instructions—Start at point and work completely around. Chain 30 for foundation. Chain 12 more and go back in fifth stitch from back with 1 st in—this is for the picot—ch 2, skip 7, 2 slts in 2 sts of long chain—this completes the first loop. Chain 7—go back in third st, ch 2, go back in 4th st, ch 2, skip 7, 2 slts in long chain. Repeat this same loop 4 times. Then work this same loop 5 times, skipping 6 sts only of the long chain. The next 5 loops same, skipping only 5 chains. Then 5 loops, skipping 4 chains, and next 5 loops skipping only 3 chains.

There are 25 loops at each side, and 2 slts in 2 stitches between each loop.

The center is reached—Ch 7, go back in third st, ch 7, sk 7—2 slts, ch 4, 2 st—in next 2 ch sts. Chain 6, sk 6—repeat figure just made. Then ch 12, go back in 6th st, ch 2, sk 7, 2 slts. Repeat the 25 loops in opposite direction, 2 slts, break thread.

2nd Row—Start just before picot of first loop, with 1 sl st. Chain 10, without picot—this same start applies up to fifteenth row—1 sl st in second loop between the 2 picots. Then ch 12, go back in 3th st, ch 3, 1 sl st in third loop. Then ch 3, go back in 4th st, ch 2, go back in 5th st, chain 3—1 sl st in 4th loop. Repeat this last loop until the center is reached, fasten with 1 tight sl st over the last loop. Then 2 st and 1 picot—3 times and 2 st—over the 4 sts of first center figure. Fasten with 1 sl st over the 6 sts in center and work same over the 4 sts of next figure. 1 sl st over first loop of second half. Then same loops, and the same end of row—opposite, down to point. Break thread.

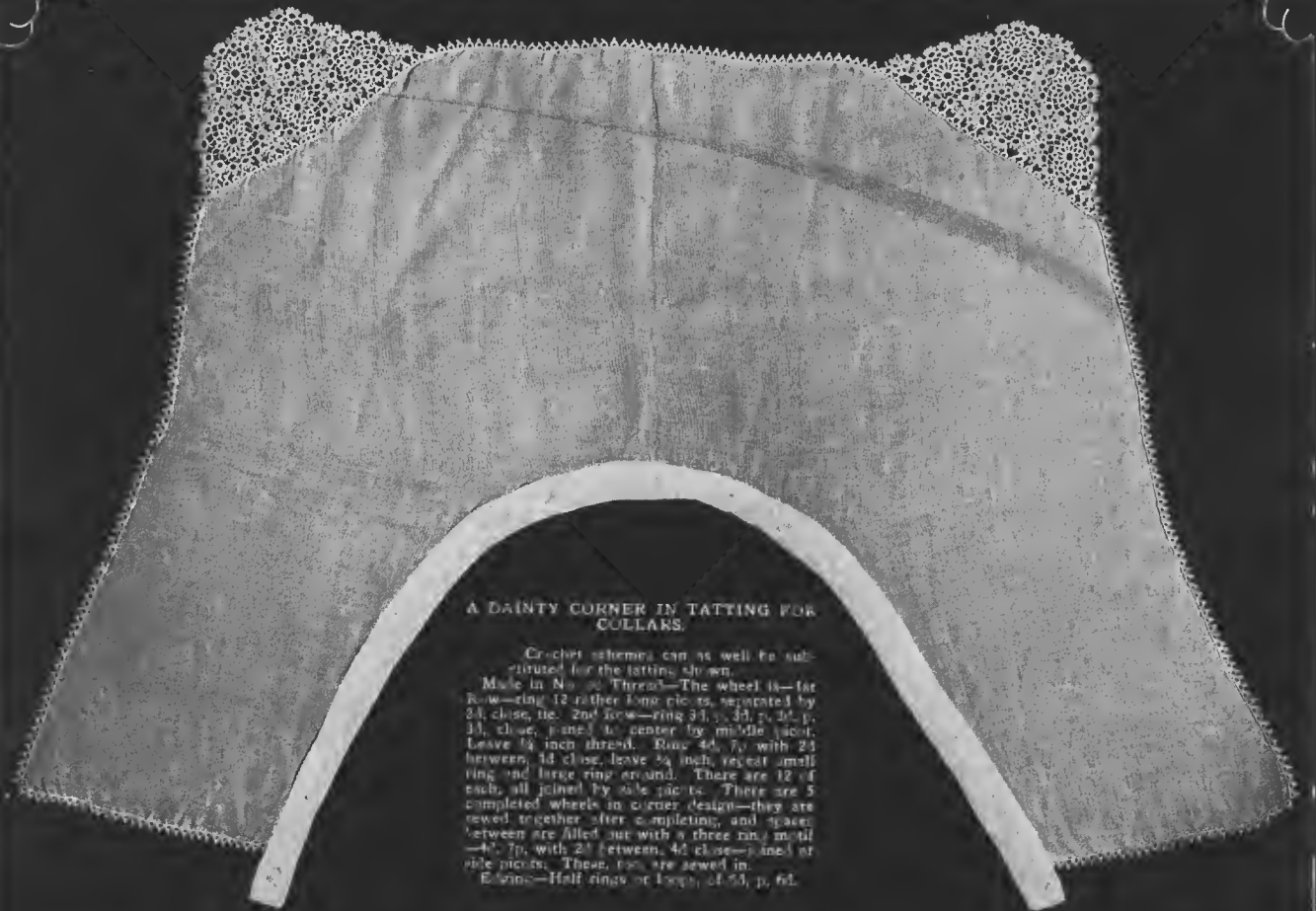
3rd Row—Start over second loop of second row—same as below. Work same loops until last loop at center is reached. Ch 8, go back in 5th st, ch 7—2 slts, ch 4, 2 st—in center piece of figure below. Ch 6, and

repeat in next center picot. Ch 12, go back in 6th st, ch 3, 1 sl st over first loop of second half. Same loop down to point, break thread.

4th Row—Same start as third row—before single picot of second loop. Work fourteen rows always omitting two loops at each side. Omit 3 loops at each side in the fifteenth row, ch 11, instead of 10. Do not work any picots in the sixteenth—the last row, ch 11, over each loop, work 2 st and picot six times instead of five and 2 st over figures in center.

Finishing Edge—This will fasten all threads. Start over loop of left side (in picture)—at the center of back, 2 sl st, 1 p, 4 sl st, 1 p, 3 sl st, 1 p—same for all large loops, and for small loops use 3 sl st, 1 p, 5 sl st. At turn—ch 3, then 4 sl st into 4 sts of long chain, 1 p, sk 1, then 4 sl st in 4 sts and picot all around inside. Note—If collar is forming the large, sk 1 chain at every other picot.

THE DAISY—Wind thread over finger 12 times, 1 sl st over this ring, ch 3, 1 petal of 5, 3 double triple treble—three! over back 3 times—then ch 5—sl st in first of these 5—for picot—and chain 2 back to ring, 1 tight sl st over ring. Ch 5—repeat petal 5 times—break thread.

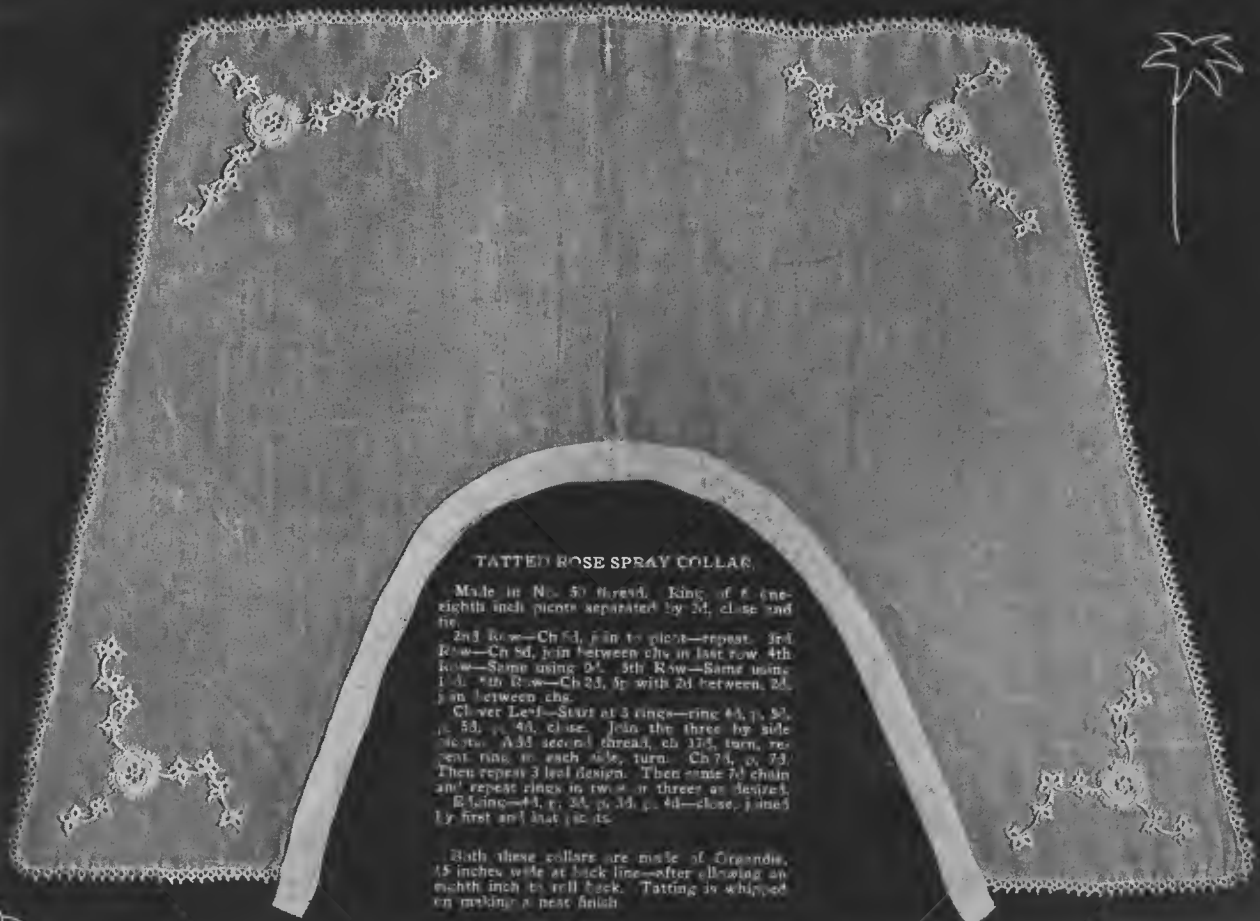


A DAINTY CORNER IN TATTING FOR COLLARS.

Crochet schemes can as well be substituted for the tatting shown.

Made in No. 50 Thread—The wheel is—1st Row—ring 12 rather long picots, separated by 24, close, etc. 2nd Row—ring 31, 3, 33, 7, 35, 11, close, joined to center by middle picot. Leave 1/4 inch thread. Ring 43, 7, with 24 between, 14 close, leave 1/4 inch, repeat small ring and large ring around. There are 12 of each, all joined by side picots. There are 5 completed wheels in corner design—they are sewed together after completing, and spaces between are filled out with a three ring motif—43, 7, with 24 between, 42 close—joined at side picots. These, too, are sewed in.

Edging—Half rings or loops, 24, 53, p. 61.



TATTED ROSE SPRAY COLLAR.

Made in No. 50 thread. King of 6 one-eighth inch picots separated by 24, close and tie.

2nd Row—Ch 51, join to picot—repeat. 3rd Row—Ch 50, join between chs in last row. 4th Row—Same using 24. 5th Row—Same using 14. 6th Row—Ch 25, 3, with 24 between, 24, join between chs.

Clower Leaf—Start at 3 rings—ring 44, 7, 53, 11, 40, close. Join the three by side picots. Add second thread, ch 124, turn, repeat ring in each side, turn. Ch 74, 9, 73. Then repeat 3 leaf design. Then come 70 chain and repeat rings in two or three as desired.

Edging—44, 7, 24, 11, 44—close, joined by first and last picots.

Both these collars are made of Grosgrain, 15 inches wide at back line—after allowing an eighth inch to roll back. Tatting is whipped on making a neat finish.





This collar and cuff are made of a good quality of Organdy—the edge is rolled and whipped on.

MEDALLION AND INSERTION COLLAR.

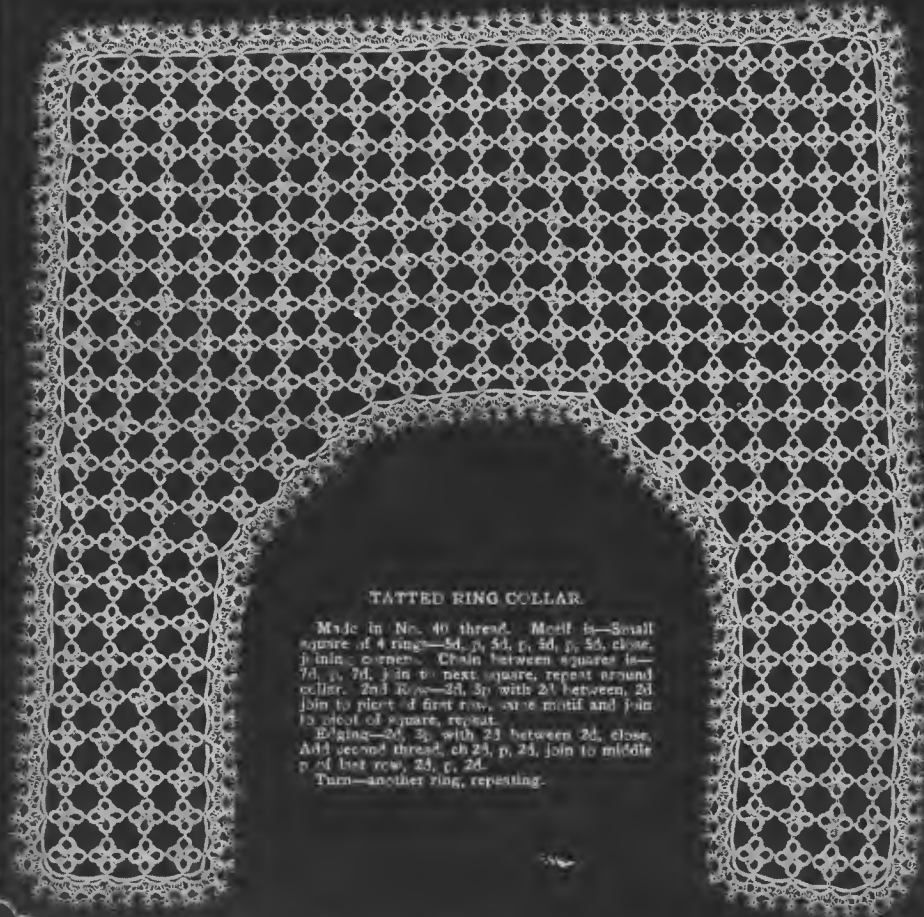
This same scheme will work admirably with crocheted medallions and insertions.

This is made in No. 4 thread. Medallion is—join 6 rings of 2d, 3p with 2d bet, 2d, close. Join third p of last ring to first p of first ring. 2nd Row—Same ring—tie on second thread, turn, ch 7d. Turn Ring 7d, join to ring just made, 4d to center motif, 4d, p, 7d, close. Ring 2d, 3p with 1d bet, 2d, close. Turn, ch 7d.

Edging is—Ring 2d, p, 2d, p, 2d, p, 2d, close. Add second thread—turn, ch 7d. Turn, ring, 2d, join to ring, then 4d, p, 4d, p, 7d, close. Lower ring, is 2d, 3p with 1d between, 2d, close. Turn, ch 7d, and repeat.

Insertion is—ring 2d, p, 4d, p, 2d, close. Add second thread, turn, ch 7d, turn. Ring 7d, join to last plect of small ring, 1d, p, 7d, close. Turn, ring, 2d, 3p with 1d between, 2d, close. Turn, ch 7d, and repeat from beginning.

Turn at end, ch 5d, turn, ring 2d, 3p with 1d between, 2d, close. Turn, ch 5d, join to center of small ring, ch 7d, join to center of large ring; make ring, like last, ch 7d and repeat from beginning of 7 chains.

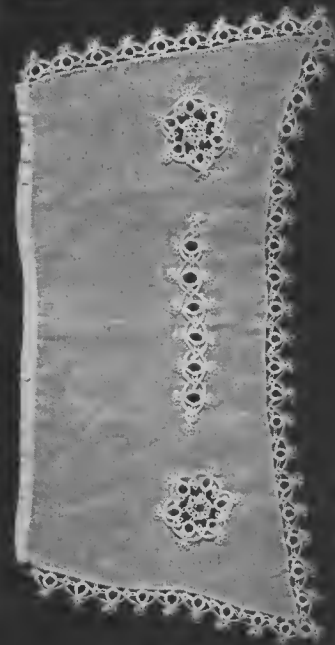


TATTED RING COLLAR.

Made in No. 40 thread. Motif is—Small square of 4 rings—2d, p, 2d, p, 2d, p, 2d, close, joining corners. Chain between squares is—7d, p, 7d, join to next square, repeat around collar. 2nd Row—2d, 3p with 2d between, 2d join to plect of first row, same motif and join to plect of square, repeat.

Edging—2d, 3p with 2d between, 2d, close. Add second thread, ch 2d, p, 2d, join to middle p of last row, 2d, p, 2d.

Turn—another ring, repeating.



JABOT OF BOBPINET WITH MEDALLIONS.

Made in No. 30 Thread.

Medallion 1—Make and join 4 rings of 6d then 5p with 2d between each, 2d close, joining first and last pieces. Make these pieces rather long.

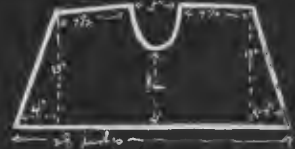
2nd Row—Small rings—3d, join to point of first ring, 3d close. Tie on second thread, turn on 3d, p, 3d, then another small ring and repeat around each, joining last chain to first ring.

3rd Row—Make clover leaf, first ring 2d, then 3p with 2d between each, 2d close. Second ring—3d, join to last piece of first ring, 2d p, 1d, join to corner of first motif, 1d, p, 2d, p, 3d, close. Third ring like first. Tie on second thread, turn, ch 3d, 3p with 3d between each, 3d. Make ring like last, joined to next piece of chain. Repeat making clover leaf at each corner and three small rings between. The edge is—small rings of 3d, 5p with 2d between each, 3d close. Leaving space and joining first piece to last piece of ring before. This requires a half yard by 1 yard of bobinet, cut as is directed shown.



Crochet motifs in the lighter thread can be adapted to these same schemes for jabots.

$4\frac{1}{2} \times 15$ inches
back $\frac{1}{2}$ inch



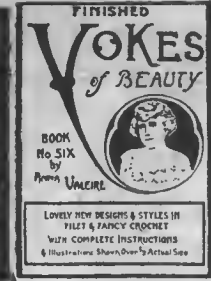
THE TATTEL POINT JABOT.

This is made in No. 40 thread. For point start at base of ring in second row from top of motif, going down to point then back up to second row, over to start and then longest row last to join conveniently. Chain 7d, 3p with 2d between each 7d—turn. Ring—next row to bottom—10d, p, 5d, p, 5d close—turn. Ring—next row to bottom—Ch 6, ring, 3d, p, 3d, close. Ch 5d, turn. Join to p of large ring, 3d, p, 3d, p, 5d, close, turn. Ch 6d, ring—large one at point—3d, join to p of small ring, 2d, p, 2d, p, 3d, p, 3d, close. Ch 6d, turn, make third large ring, joined to second one, turn. Ch 6d, ring 3d, join to last piece of bottom ring, 5d, close. Ch 6d, turn. Join 5d, join to third large ring, 3d, p, 10d, close, turn. Chain like first one made.

2nd Row—Ring 10 p, 5d, p, 5d, close. Turn, ch 6d, join to top piece of large ring in first group, ch 6d, turn, ring 5d, join to point of last ring made, 5d, p, 5d, close. Turn, repeat ch and rings for 3 large and 2 small rings, omitting last piece on last large ring. Turn chain like first made.

3rd Row—Ring 3d, p, 5d, p, 3d, p, 5d, close. Turn, ch 6d, join to top piece of ring below, 6d, turn. Another large ring, joined to first one, turn. Ch 6d, ring 1d, p—3 times—1d, close. Ch 6d, turn. Another large ring and repeat—d of 3 large rings and 2 points. Chain like first made. Cut threads. Tie loose chains to base of rings in second group from top. Join points by points in top row.

Edge—Ring 5d, p, 3d, close. Leave $\frac{1}{2}$ inch. Ring 5d, join to p of small row, 3d, p, 2d, p, 2d, p, 3d, p, 5d, close. Leave $\frac{1}{2}$ inch. Ring 5d to last p of large ring, 5d, close. Repeat—leaving space between small rings.



THE ANNA VALEIRE BOOKS

No. 1. Edges Med. and Ins. has all the good things wanted for narrow work, and shows a dainty Fillet Child's Yoke and designs for three more. Also the Snow Knot Fillet Yoke and four more designs.
No. 2. Panels, etc. The choicest of wider pieces and Medallions.
No. 3. Tatting. Eighty pieces old and new and the Alphabet.
No. 4. NY Trousseau—Eight Yokes, Aprons, Medallion Scarfs, Fillet Corners, Slippers, Caps, Fingert Edges, Insertions and Real Flowers.
No. 5. Sweaters, six of the newer schemes; two new jackets, the Soldier's Wearings, Children's Outfits and Golfers' things.
No. 6. YOKES OF BEAUTY—What its name implies. Thirteen finished Yokes of new designs and new styles, every one is out of the ordinary. In Fillet, Medallions, Knot Stitch, Clover Leaf and fancy stitches. It is without doubt the best yoke book ever produced.

THE EMMA FARNES BOOKS.

No. A. Milady's Lingerie, has eight full-page Yokes, three Caps, many Towels, Novelties, Purses and Trimmings.
No. B. Has 9 Alphabets, various sizes, in Fillet and one in Tatting.
No. C. NEW YOKES—A choice collection of styles and designs entirely different. The kind of Lingerie you will be proud of having made.
No. D.—Large Fillet Designs—fifty of the prettiest original pictures and designs—Corners, Scarfs and Altar Cloth Motifs. A book to turn to when you are wanting something new and different for the home.
No. E. Caps, Collars and Jabots. Twelve Caps, seven Collars and two dainty Jabots. An assortment that will provide a wide selection.
No. F. Edges and Corners. The classiest hook of all in its line.
No. G. The Antique Design. In Yokes, Corners, Edges, Insertions. These books are recognized as the best. You should have them all.



Copyrighted, published and distributed by
E. C. SPUEDLER, ST. LOUIS, MO.
They are priced 10c—12c by mail—and dealers
everywhere have them. Carried by all leading
THREAD JOBBERS
DISPLAY BOOKS OPEN AT MIDDLE PAGE

